

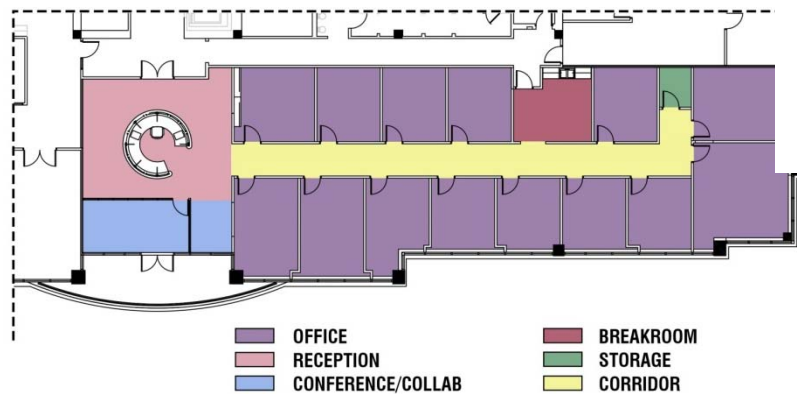


Parkway Plaza Greenville, South Carolina

Design South was commissioned to renovate space on the 5th floor of Parkway Plaza for new tenants, Flynn Wealth Management Group. By removing a majority of the existing walls in this space, we were able to create 14 offices, a breakroom, a reception area, a conference room, a collaboration area and a storage room, with new finishes scheduled throughout the entire space.

Client Reference Pinnacle Hospitality
Phil Simmons
4250 S. Church St
Roebock, SC 29376

Building Size 5,000 sq ft
Renovation



COMMERCIAL



DESIGN SOUTH
PROFESSIONALS, INC.
engineers architects planners